



PRM/KA/RERA/1251/309/PR/180823/006187  
PRM/KA/RERA/1251/309/PR/110823/006163  
PRM/KA/RERA/1251/309/PR/110823/006164  
PRM/KA/RERA/1251/309/PR/110823/006165



## **PROVIDENT** **ECOPOLITAN**

Aerospace Park, Bengaluru North

Developed by **Provident White Oaks**



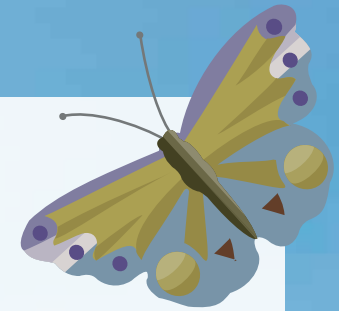
# Nature-first homes.







# ABOUT PROVIDENT



Established in 2008 as a 100% subsidiary of Puravankara Limited, Provident Housing Limited is a large-scale community developer that caters to the diverse residential needs of buyers, with a focus on aspirational home ownership.

15

Years of trust

50,000+

Happy customers

9

Project presence across cities

12,000+

Homes delivered

12.8

Million sq.ft. delivered

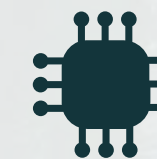
5000+

Homes in the making





# HOMES BUILT WITH MORE



## MORE TECHNOLOGY

We pay close attention to making our homes future-ready.



## MORE SUSTAINABILITY

We put nature at the centre of our processes and efforts.



## MORE TRANSPARENCY

Respect for our consumers translates to adoption of honest practices.



## MORE VALUE

We strive to bring you a holistic living experience within a thriving community.



## MORE TRUST

Uncompromising integrity is the way of life at Provident.



## MORE QUALITY

Our work is built on modern technique, meticulous detailing, and industry expertise.

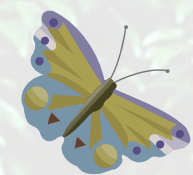
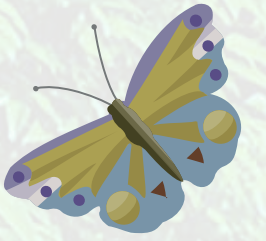




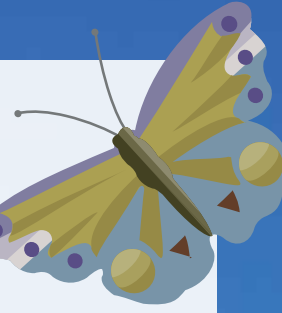


# A NEW SPECIES OF HOMES ARE BORN

We have built an ecosystem with a new species of homes, which is poised to be the next benchmark of sustainable living. One where 45+ types of plants and shrubs also find a home. Where biodiversity thrives with you. Where consciously sourced materials and responsible processes are implemented. Where the world our future generations need and deserve comes alive.







# **PROVIDENT ECOPOLITAN**

Aerospace Park, Bengaluru North

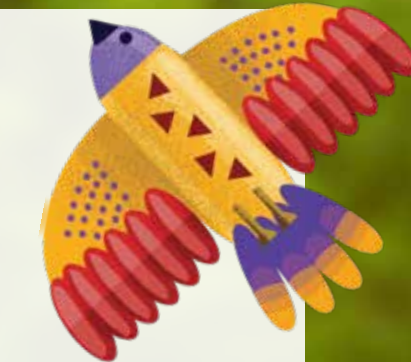
Developed by **Provident White Oaks**

## NATURE-FIRST HOMES

Provident Ecopolitan represents a haven for individuals who prioritize ecological consciousness. This thoughtfully constructed residential development offers a plethora of amenities that place nature at the forefront. It serves as a sanctuary where residents can prioritize their well-being and happiness in a sustainable manner while enjoying top-quality urban facilities. With its advantageous proximity to the Devanahalli airport, as well as key business, education, and health centres, the locality is experiencing rapid growth and is set to thrive even further in the future.

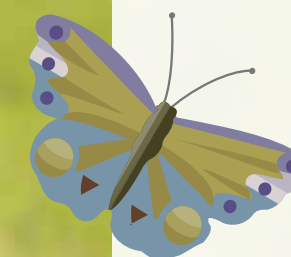






# LIVE WITH NATURE LIVE FOR NATURE

Provident Ecopolitan is located at Aerospace Park in North Bengaluru. Close to the Kempegowda International Airport. High tech companies like Shell, Autoliv, Boeing, SAP Labs within minutes of our premises. 20-30 min\* drive to IT parks like Ecopolis, L&T Tech Park, Kirloskar Tech Park and Manyata Tech Park. Well connected by NH44, SH104 and New Airport Road. Close to retail, schools, and other civic infrastructure. Phase 2A and 2B of Bengaluru Metro connecting Central Silk Board, KR Puram, and Kempegowda International Airport, expected to be operational by 2025\*\*. This location is already investment-worthy and packs immense potential for exponential returns in the near future.



\*Information mentioned here is for indicative purpose only.  
\*\*Source: <https://swarajyamag.com/>





# DISTANCES

## Schools and Colleges

- Jawahar Navodaya Vidyalaya - 6 mins
- Air Force School, Yelahanka - 20 mins
- Brindavan Group of Institutions - 18 mins

## Tech Parks

- Kirloskar Tech Park - 28 mins
- L&T Tech park - 24 mins
- Ecopolis IT/ITES SEZ - 20 mins
- Manyata Tech Park - 22 mins

## Lifestyle and Retail

- Mall of Bengaluru - 20 mins
- The Galleria Mall - 22 mins
- Club Cabana Amusement Park - 21 mins
- Devanahalli Fort - 24 mins

## Companies in Aerospace Park

- Shell research - 5 mins
- Autoliv - 7 mins
- Boeing - 14 mins

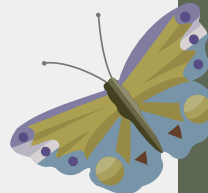
## Hospitals

- Manipal Hospital - 35 mins
- Aster CMI Hospital - 28 mins





# MASTER PLAN



## LEGEND

1. Residential Entry

2. Residential Exit

3. Retail Entry

4. Retail Exit

5. Retail Pedestrain Entry Exit

6. Club House

7. Parking Below
8. Basement 1 Exit

11. Transformer Yard & DG Yard

12. Organic Waste Converter

13. Surface Parking

## OUTDOOR AMENITIES

14. Farmer's Flea Market

14A. School Bus Pickup Point

15. Security Cabin

16. Pedestrian Path

17. Driveway

18. Bicycle Lane

19. Nature Trail

## SPORTS AMENITIES (PARKING ROOF)

20. Bird Watching Deck

21. Picnicking Mounds with Hammock & Camping Area

22. Children's Play Area

22A. Outdoor Gym

23. Amphitheater with Stage
24. Informal Seating

25. Sunken Seating

26. Reflexology Path

27. Forest Greens with Elevated Pathway

28. Main Pool

29. Pool Deck with Shade Structure and Loungers

## CLUBHOUSE AMENITIES

30. Kids' Pool

31. Changing Room

32. Yoga Deck/Viewing Deck (At Club House 2nd Floor)

33. Lawn with Informal Seating

34. Seating Gallery W/Tensile Structure
35. Jogging Track

36. Mini Soccer Field

37. Informal Seating Area

38. Skating Rink

39. Cricket Practice Net

40. Multi Purpose Court

41. Private Terrace

42. Entry to parking
- Co-working space/Library

• Multipurpose hall

• AV room

• Indoor games

• TRX

• Gym

• Billiards and TT room

• Badminton court
- Squash court

• Aerobics/yoga

• Gaming room

• Jamming room

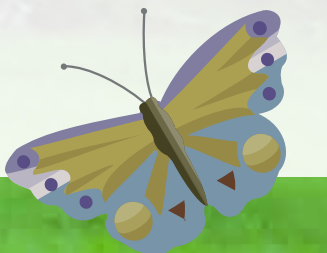






# HOMES WITH A GOOD HEART

At Provident Ecopolitan, we have planted 1 tree per family.  
This project is home to 45+ indigenous plants and shrubs.  
Wake up to a symphony of birds songs and gorgeous green views.  
Breathe in endless breaths of fresh air.  
Homes where peace and joy come together in harmony.







High Street Retail



Multi-purpose Court



Mini Soccer



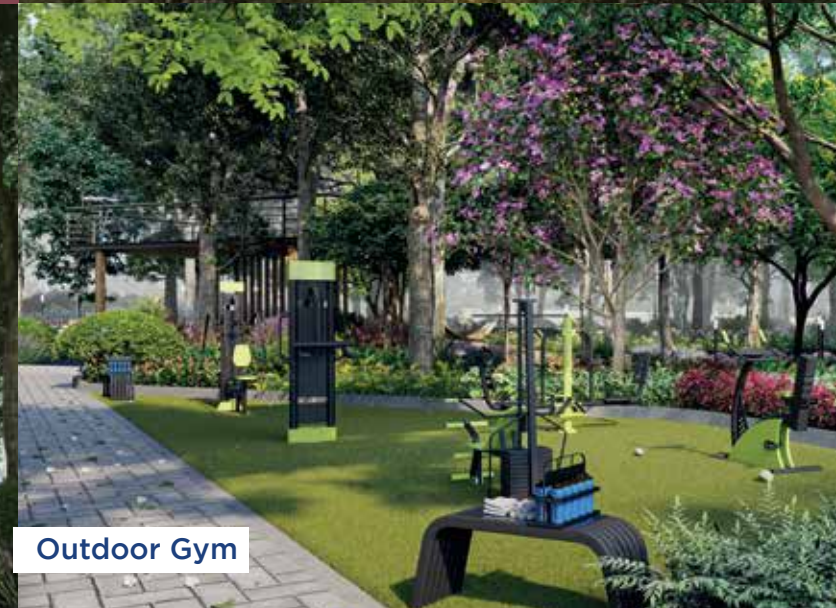
Bird Watching Deck



Reflexology Garden



Nature Trail



Outdoor Gym



Children's Play Area



Swimming Pool



Sunken Seating Area



Amphitheatre with Stage

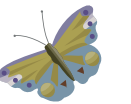


Skating Rink

# EXQUISITE AMENITIES FOR A HARMONIOUS LIFESTYLE

Bird Watching Deck | Bicycle Lane | Amphitheatre with Stage | Outdoor Gym  
Co-working Spaces | Forest Greens with Elevated Pathway  
TRX | Jamming Room | Squash Court  
And many more...

Provident Ecopolitan is replete with modern amenities designed to ensure  
your wellbeing is restored after the day's work.







# WE ARE SUSTAINABLE TO THE CORE

Future-readiness is at the centre of our innovation philosophy. We have re-engineered our processes and offerings to make them greener, healthier, and more sustainable. The result is a stunning residential ecosystem called Provident Ecopolitan.



CIVIL



WATER



ENERGY



LANDSCAPE



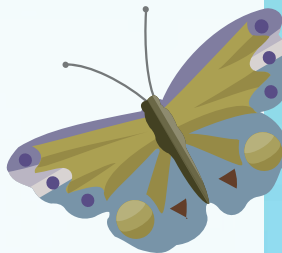
WASTE







# CIVIL



- PPC cement which incorporates fly ash that significantly reduces carbon footprint compared to traditional cement
- Slag sand or M-sand, unlike traditional sand, acts as a 100% replacement for river sand, thereby reducing the negative impact on river ecosystems
- Recycled construction aggregates instead of stone aggregates in non-structural elements, which helps prevent natural resource depletion
- Responsible Flooring which has high percentage of recycled content and lower CO2 emission
- Non-toxic, low-VOC paints used to reduce environmental damage and eliminate carcinogenic materials to promote health and safety

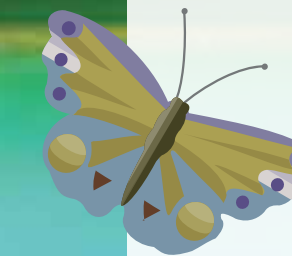






# WATER

- Water efficient fixtures and aerators that reduce water wastage
- MBR STP with better water saving capabilities than SBR
- Rooftop rainwater harvesting that helps use of rainwater
- Cost savings of ₹ 68 lakhs/year\*







# WASTE

- Scientific dry and wet waste segregation and management
- Organic waste composter of 1.32 tons rotary drum capacity to help in the quick conversion of wet waste to manure, which can be used as a natural fertilizer





# ENERGY

- Rooftop photovoltaic solar system promotes energy independence and reduction of carbon footprint
- Common area powered by 55 kW peak solar panels which will lead to cost savings of almost ₹6 lakhs per annum\*
- Solar water heating in the top 2 floors which will lead to annual savings of ₹30 lakhs\*
- EV charging stations provision in 25%\* of the total number of car parks





# LANDSCAPE

- 1300+\* trees in the development
- Almost 45+\* indigenous species of flora that avoid increased usage of water
- The total lung space in the project is more than 60%\* which enhances the idea of healthy living







# KNOW YOUR ECOPOLITAN HOME BETTER

- 100%\* vastu-compliant homes
  - Externally ventilated rooms
  - Full-height glazed windows in the bedrooms for maximum natural light
  - 2-balcony homes in the Grand Series
  - Strategically placed invisible outdoor AC units
  - Maximum privacy homes designed such that 2 homes don't face each other
  - Efficient carpet areas for maximum utility
- 

\*Terms and conditions apply



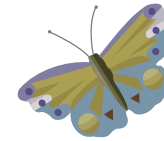




# **PROVIDENT ECOPOLITAN**

Aerospace Park, Bengaluru North

Developed by **Provident White Oaks**



PRM/KA/RERA/1251/309/PR/180823/006187 | PRM/KA/RERA/1251/309/PR/110823/006163 | PRM/KA/RERA/1251/309/PR/110823/006164  
PRM/KA/RERA/1251/309/PR/110823/006165 | For more information: <https://rera.karnataka.gov.in/>

 **080 4455 5511**  [www.providenthousing.com](http://www.providenthousing.com)

 [sales@providenthousing.com](mailto:sales@providenthousing.com)



Changes may be made during the development and standard fittings and specifications are subject to change with notice. Standard fittings and finishes are subject to availability and vendor discretion. The interiors shown in the brochure are not standard and will not be provided as part of an apartment. The information contained herein is believed to be true but not guaranteed. The colors of the building are indicative. This is a reference document intended only to provide general information and does not constitute an offer or contract. Customers are encouraged to carry out their own due diligence, including but not limited to a review of the agreement to sell and payment terms and conditions prior to submission of booking documents.

The images used in the brochure are indicative of style only. The photographs of the interiors, surrounding views, and location are for representational purposes only and may have been digitally enhanced or altered and do not represent actual views or surrounding views. Floor plans and unit plans are in accordance with the last approved sanctioned plan and may be subject to change mandated by government authorities and/or applicable law.

All the information mentioned here is for indicative purposes only. Terms and conditions apply.

